



CHEMISTRY

Freestanding Height Adjustable

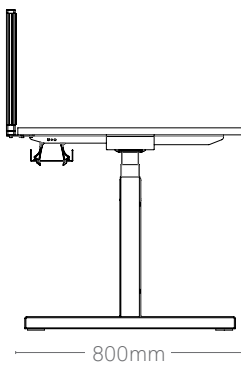
Chemistry incorporates a height adjustable workstation solution to respond to the needs of today's office, where simple elegance and inherent functionality are a must to meet a multitude of applications.

Chemistry height adjustable desks make individual requirements possible, allowing the option to vary posture and stand whilst working.

Designed to fully interact with the user, whether that be seated or standing,

height adjustable desks permit the user to quickly set their optimum working height by means of a responsive manual adjustment or via a push button electronic mechanism.

DIMENSIONS



Fixed.
730mm
Crank.
650-850mm
Speedy Crank.
730-1230mm
Electric.
650-1250mm



DESIGN

Senator

Our team of talented in house designers are responsible for creating elegant, innovative furniture designs which not only look beautiful, but minimise the impact on the world around us.

They come from all over the world, but are based in our Design Centre located in a quiet Lancashire village just outside the Ribble Valley. Our dedicated facility is over three floors which include studios, a materials test centre and prototyping lab.

Standard Features (*Selected models only)

Height adjustable Steel 'I' frame
Levelling adjustment
Scalloped cable access
25mm MFC rectangular tops

Specifiable features

Fixed, Crank, Speedy Crank
Electric operation

Complementary Options

Universal Screens
Cable trays and risers

Accessories

Monitor arms
PU desk accessories
Desk top accessories
CPU holders
Electrical accessories

Performance Standards

BSEN527, Part 1, 2011
BSEN527, Part 2, 2002
BSEN527, Part 3, 2013
BSEN 6396 2008
BSEN 9241 Part 5, 1999
BSEN 15372 2008

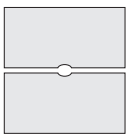
CHEMISTRY

Freestanding Height Adjustable

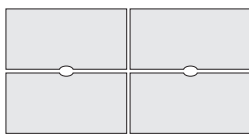
Rectangular



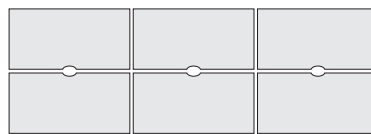
Widths.
1200-2000mm
Depth.
800mm



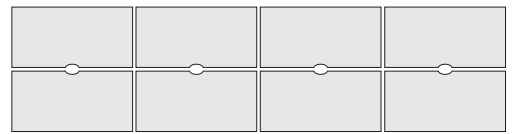
2-Man



4-Man



6-Man



8-Man

Standard Top Finishes - MFC



Carini Walnut



Mocha



Autumn



Strata Oak



Maple



Highland Oak



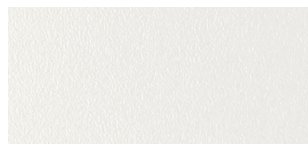
Beech



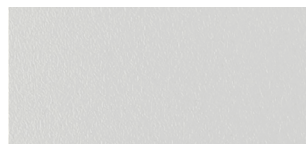
Winter Oak



Hacienda White



White



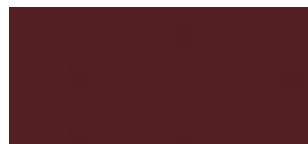
Light Grey



Denim



Clay*



Bordeaux



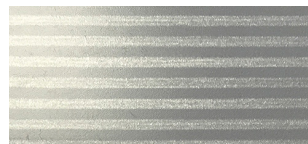
Lemon Sorbet

* MFC only

Contrasting Edge Tapes



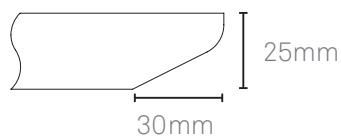
Ply Effect Edging



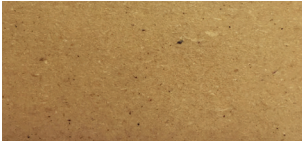
Silvery Ply Edging

Finish Options

25mm MFMDf tops are finished with a 30mm chamfered edge that is clear finished as standard or can be stained as an option.



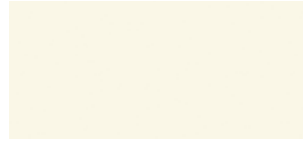
Edge Stains



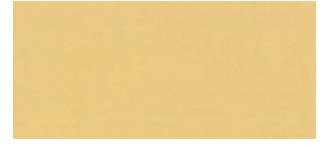
Clear (standard)



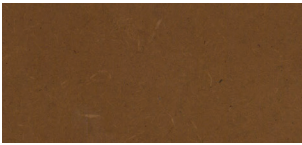
Black



White



Cream



Light Brown

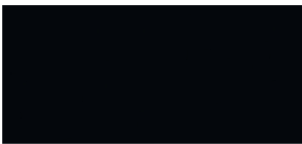


Medium Brown



Dark Brown

Frame/Leg Finishes



Black



White



Silver

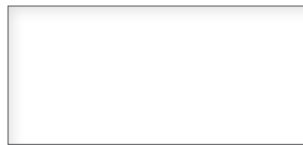
Screen Finishes - Glazed Acrylic



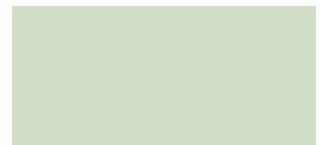
Clear



Opaque Crystal



Opaque White



Opaque Green



Opaque Blue

Screen Finishes - Glass



Grey



Smoked Grey



CHEMISTRY

Freestanding Height Adjustable

Chemistry incorporates a height adjustable workstation solution to respond to the needs of today’s office, where simple elegance and inherent functionality are a must to meet a multitude of applications.

Chemistry height adjustable desks make individual requirements possible, allowing the option to vary posture and stand whilst working.

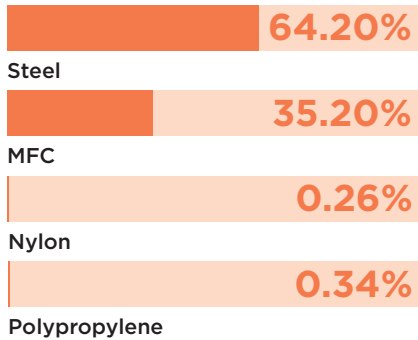
Designed to fully interact with the user,

whether that be seated or standing, height adjustable desks permit the user to quickly set their optimum working height by means of a responsive manual adjustment or via a push button electronic mechanism.

ENVIRONMENTAL

Material Content

Components are constructed of the following



Recycled Content

Contains up to 47.75% of Recycled Material



Recyclability

The range is 99% recyclable

99%

SKA Accreditation

EPA’s to ISO14025, FSC and FISP accreditation are available for all products on request.

SENATOR 3 R’S

Senator is committed to continually improving the sustainability of all environmental aspects within our business.

To meet both international standards and our own environmental targets we apply the three R’s principle

-Reduce, Reuse and Recycle.

Whilst recycling is the element which receives the most exposure it is actually the last option available and should never be the prime target in anyone’s battle to reduce waste.

It is our duty as individuals and as a company to initially attempt to **Reduce** usage. Then we should look to **Reuse** wherever possible and finally, only after these two processes have been exhausted, should we consider **Recycling**.

Reduce
Reuse
Recycle